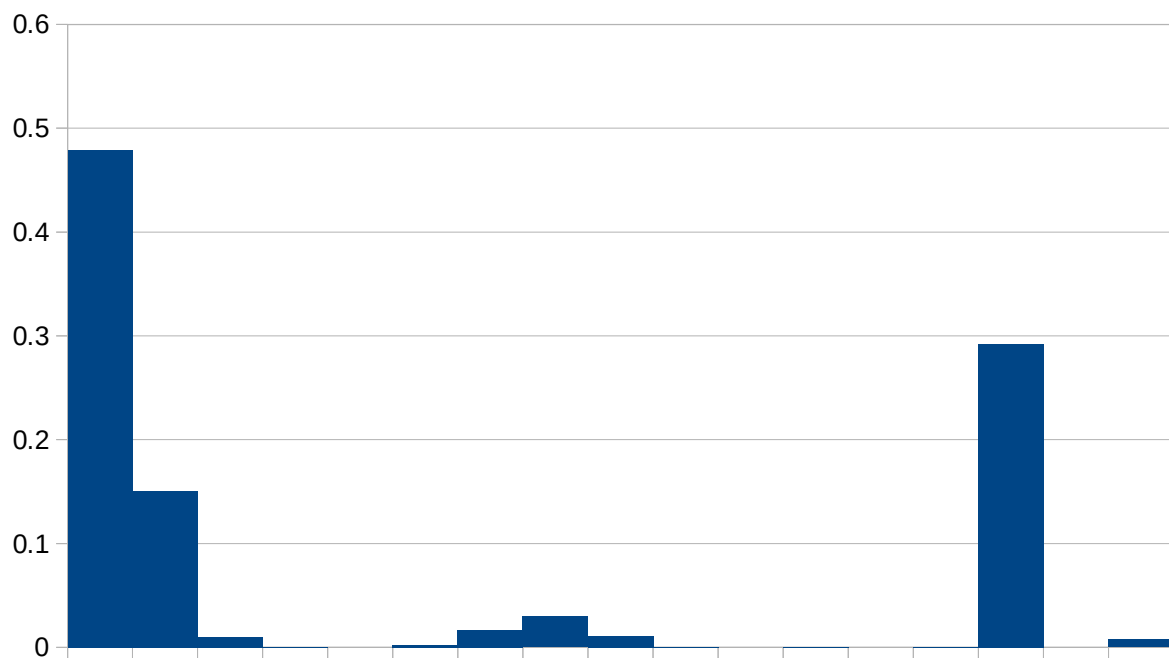


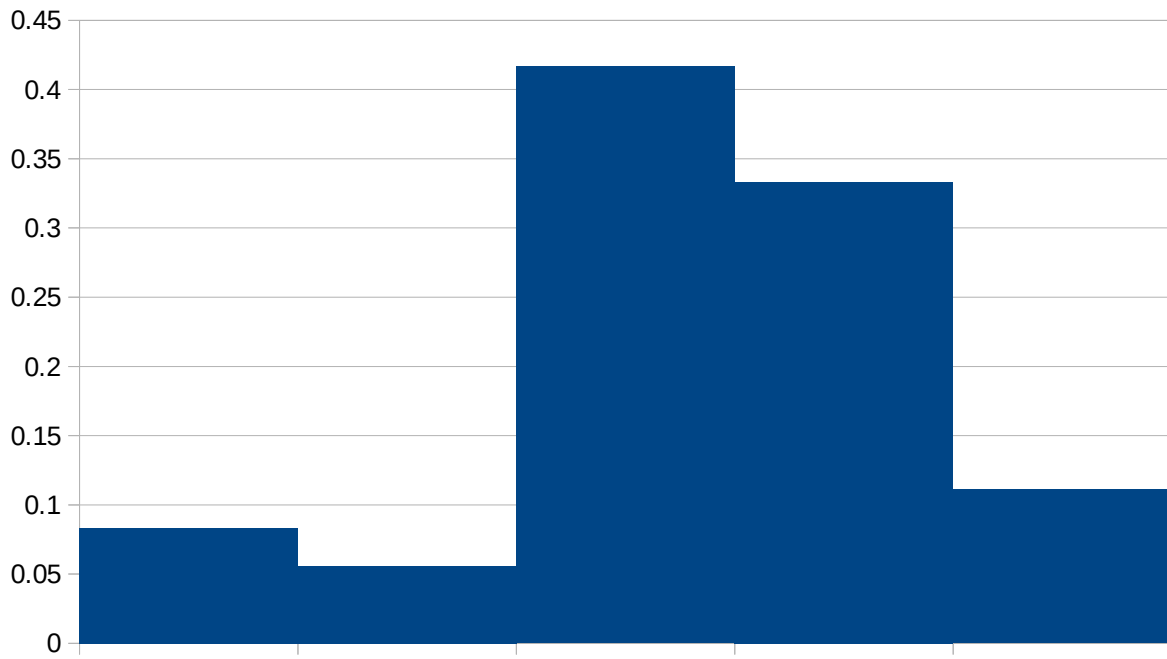
# Distribution A



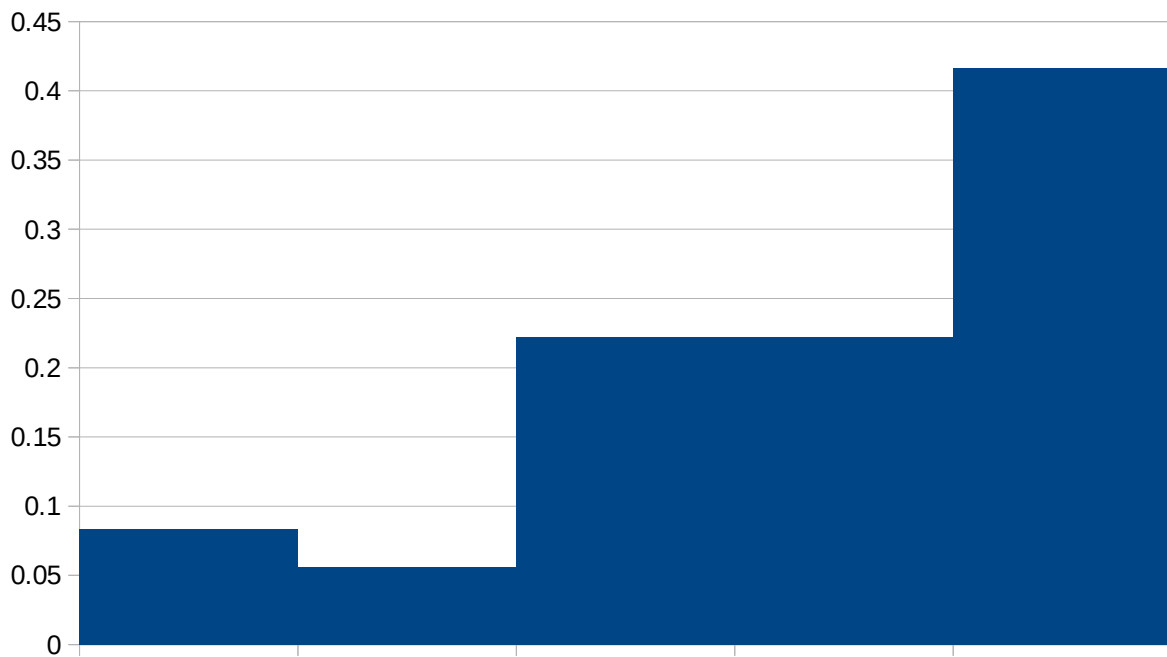
# Distribution B



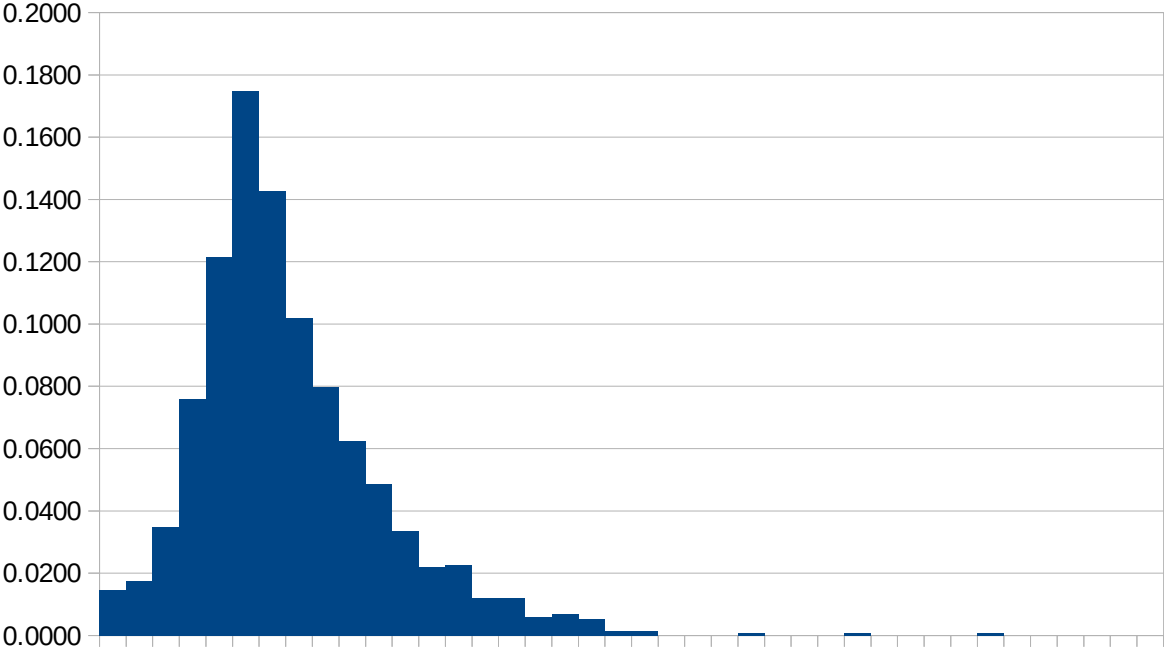
# Distribution C



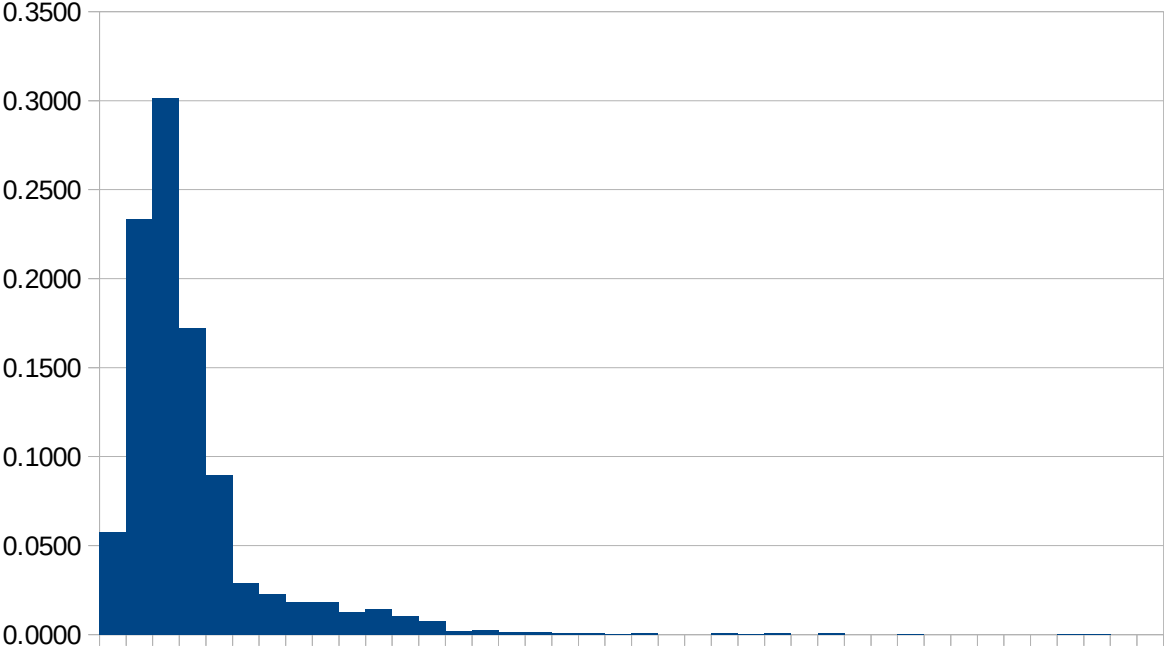
# Distribution D



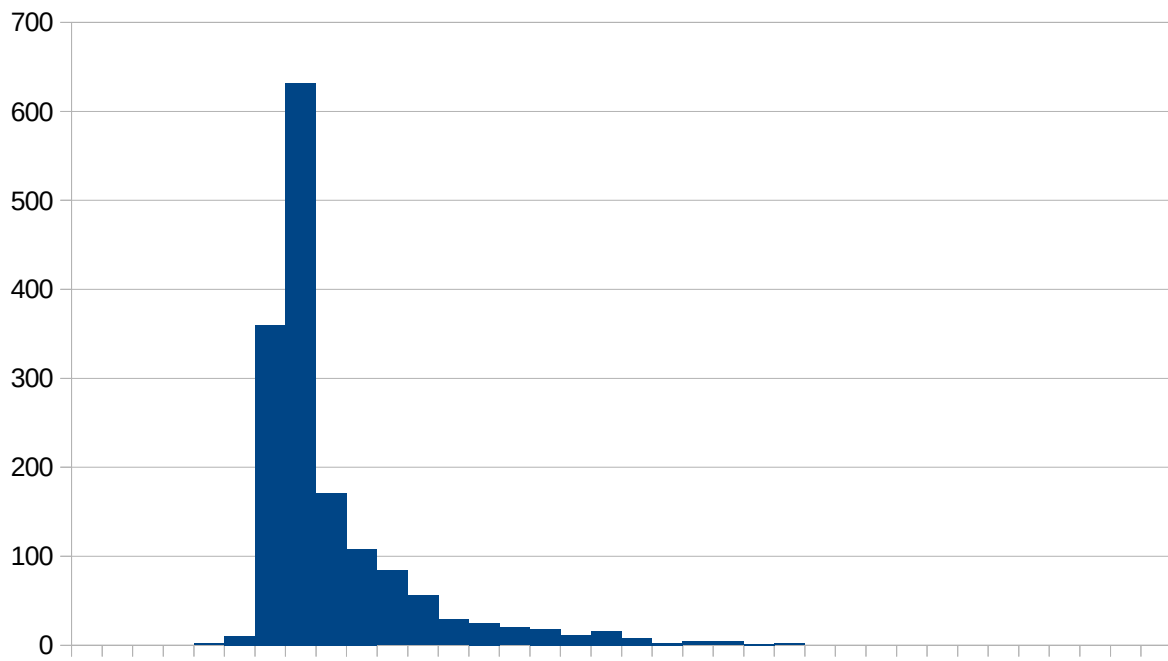
# Distribution E



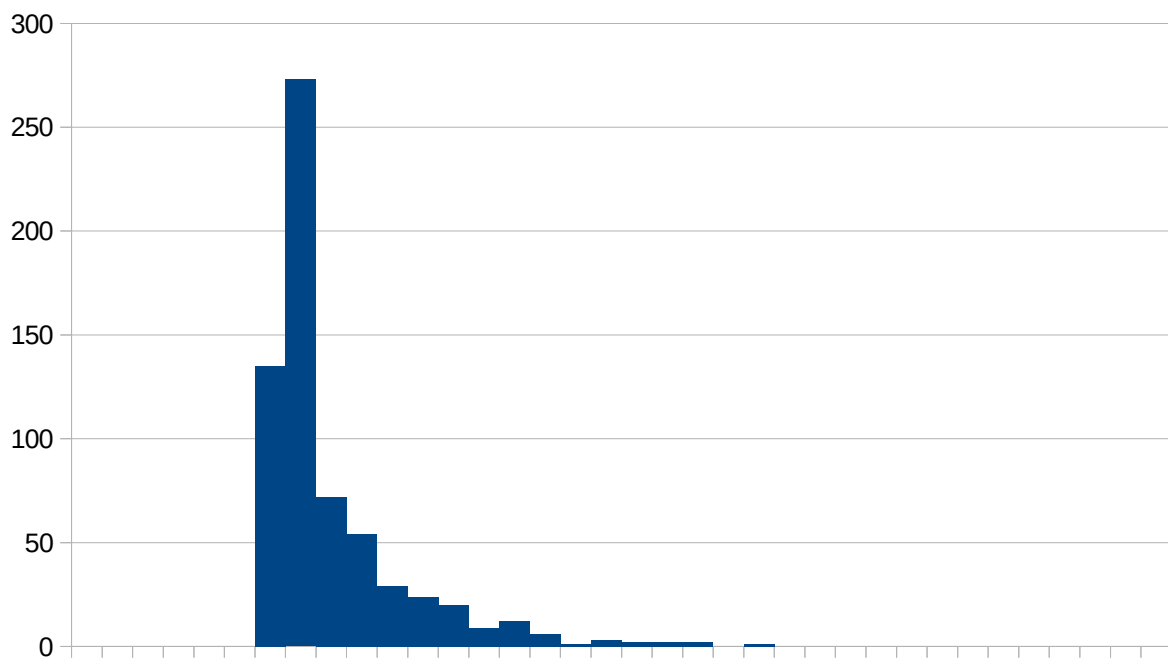
# Distribution F



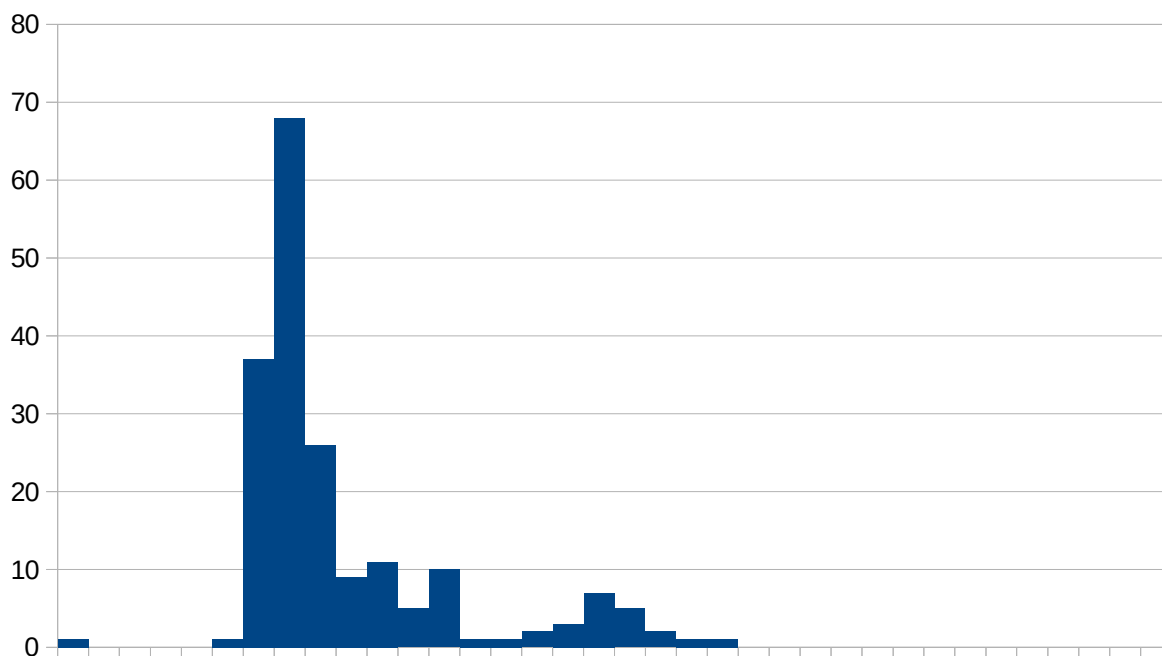
# Distribution F



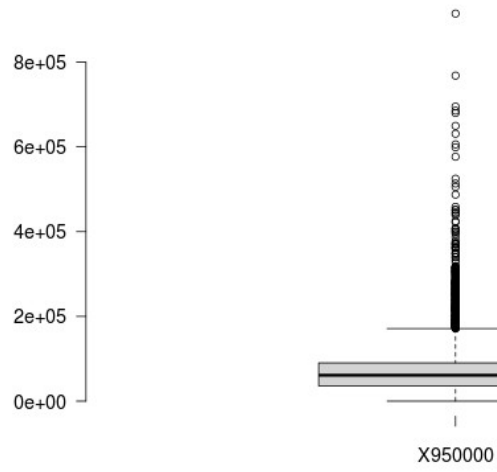
# Distribution G



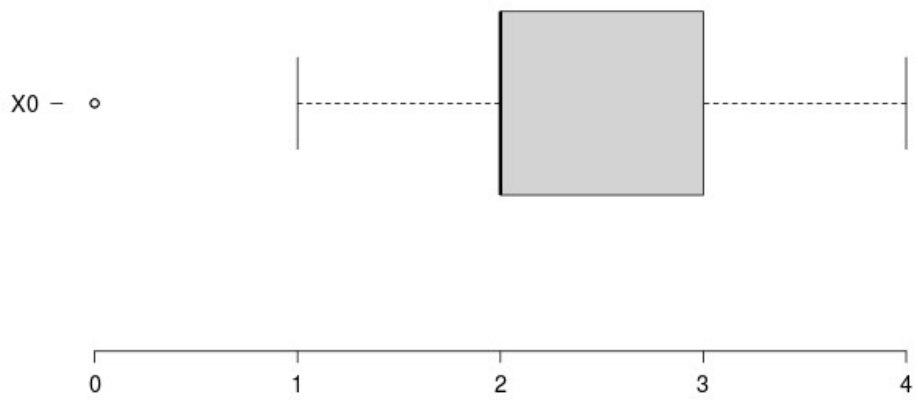
# Distribution H



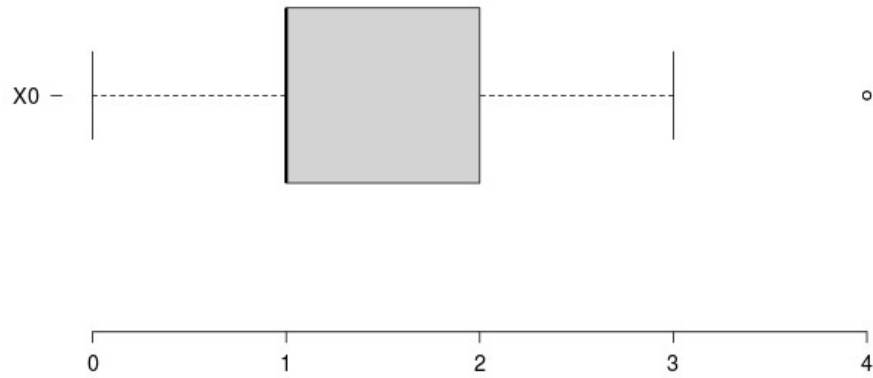
# BoxPlot 1



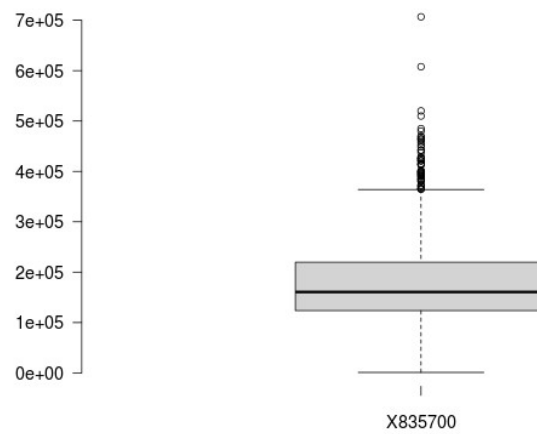
# BoxPlot 2



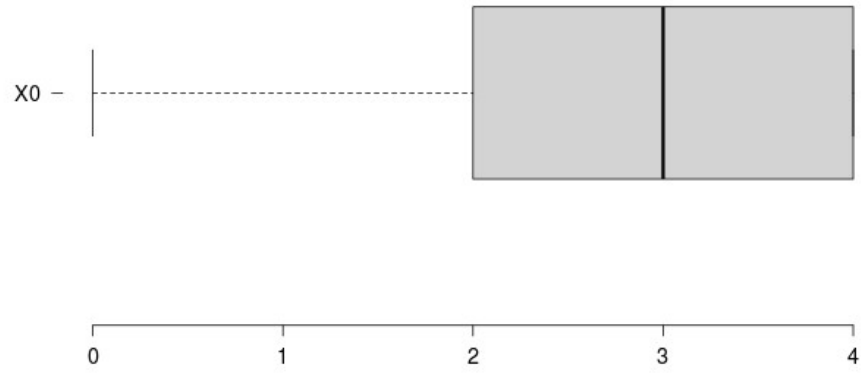
# BoxPlot 3



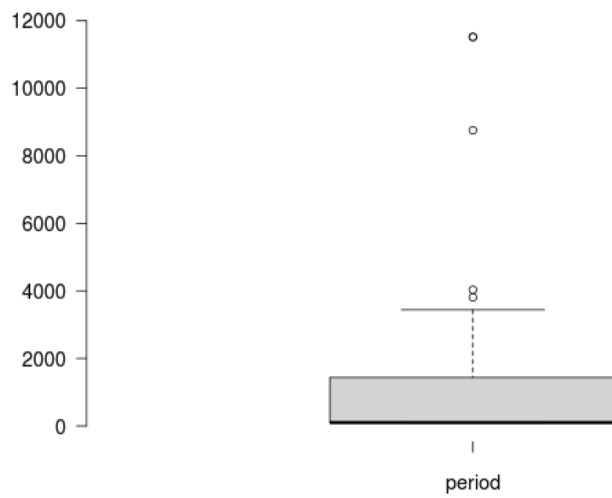
# BoxPlot 4



# BoxPlot 5



# BoxPlot 6





## Stats Z

n	1885
stdev	749.86174534
mean	563.60803183
median	100.4
min	90.52
max	11520

## Stats R

n	36
stdev	1.0419761445
mean	2.3333333333
median	2

## Stats Y

n	36.000
stdev	1.276
mean	2.833
median	3.000

Statistics	Stats S
N	1565
Mean	23.106709265
Median	20
SD	7.8516264591

## Stats W

n	3601
stdev	74132.348519
mean	86584.114135
median	67400
min	1000
max	950000

Statistics	Stats T
N	645
Mean	22.976744186
Median	20
SD	7.1403049859

## Stats X

n	1317
stdev	88751.58357
mean	178994.61276
median	160800
min	1000
max	835700

Statistics	Stats U
N	191
Mean	25.209424084
Median	20
SD	10.66619238

## Stats Q

n	36.000
stdev	1.132
mean	1.444
median	1.000

Source J: Speed of takeoff of military aircraft in WWII

Source K: The orbital period of human-made satellites around the earth

Source L: Grade distribution in an "easy" class

Source M: Grade distribution in a "harder" class

Source N: Grade distribution in a "curved" class

Source O: Property values in a more affluent area

Source P: Property values in a less affluent area

Source H: Entry test exam scores for a selective college

Source I: Average respiration rates of mammals

Source J: Distribution of ages for CCAC students at the time of enrollment in any of our **ENGINEERING** programs from SP2016 through SP2019

Source K: Distribution of ages for CCAC students at the time of enrollment in any of our **BUSINESS** programs from SP2016 through SP2019

Source L: Distribution of ages for CCAC students at the time of enrollment in any of our **ADMINISTRATIVE ASSISTANT** programs from SP2016 through SP2019

Source M: Distribution of ages for CCAC students at the time of enrollment in any of our **DATA ANALYTICS** programs from SP2016 through SP2019