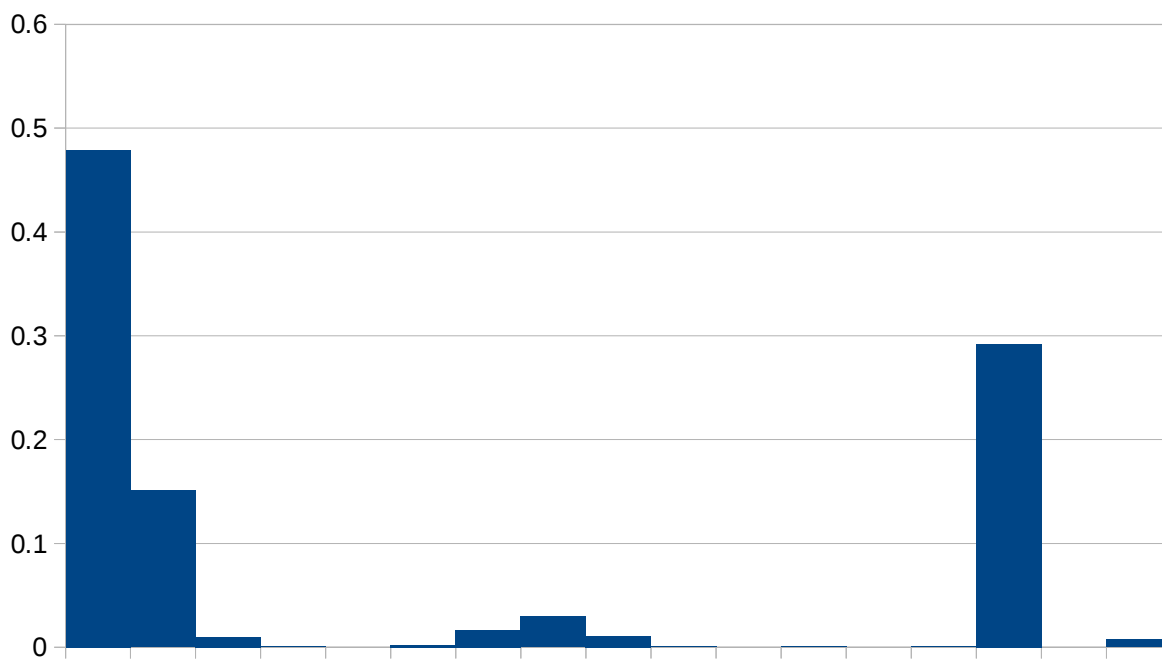


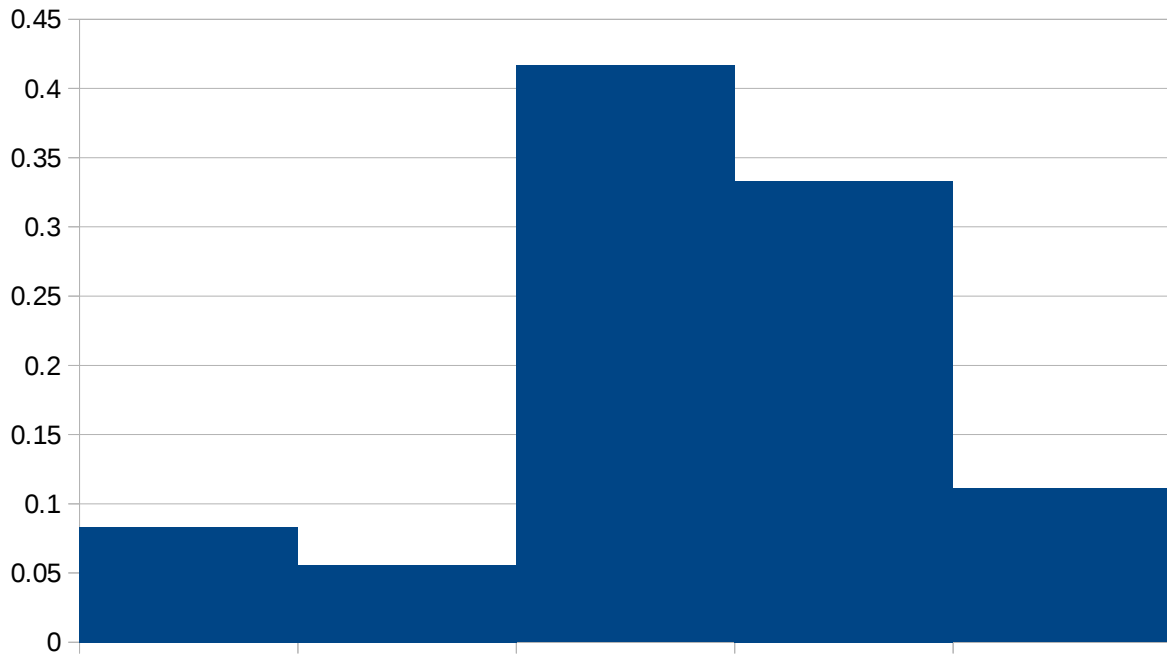
Distribution A



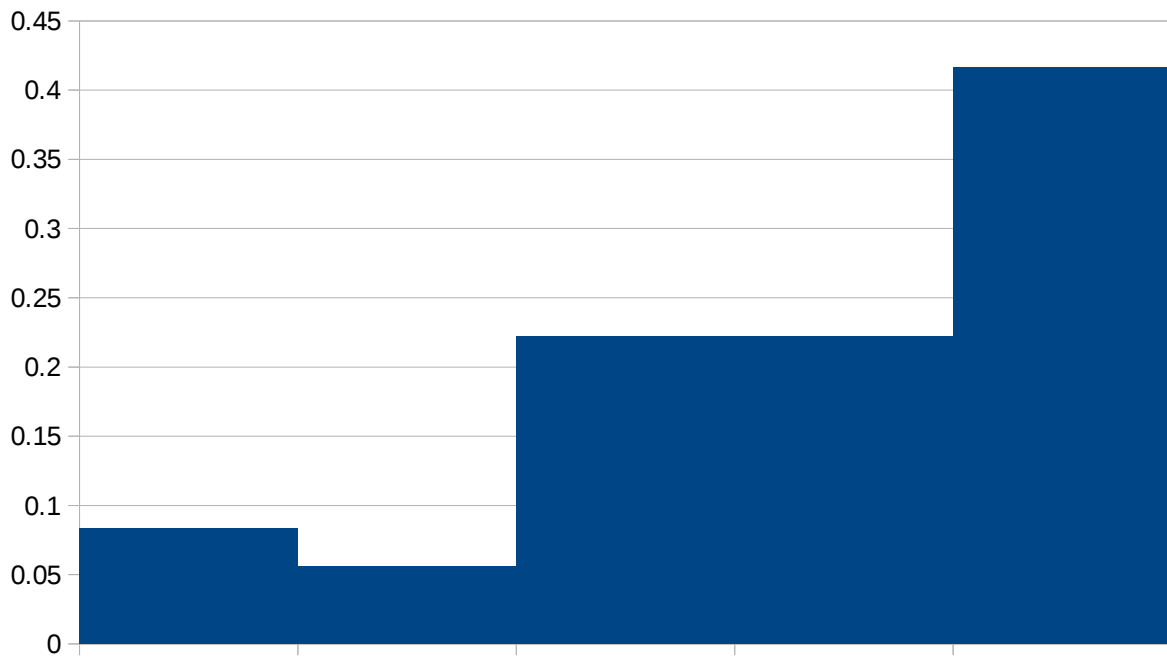
Distribution B



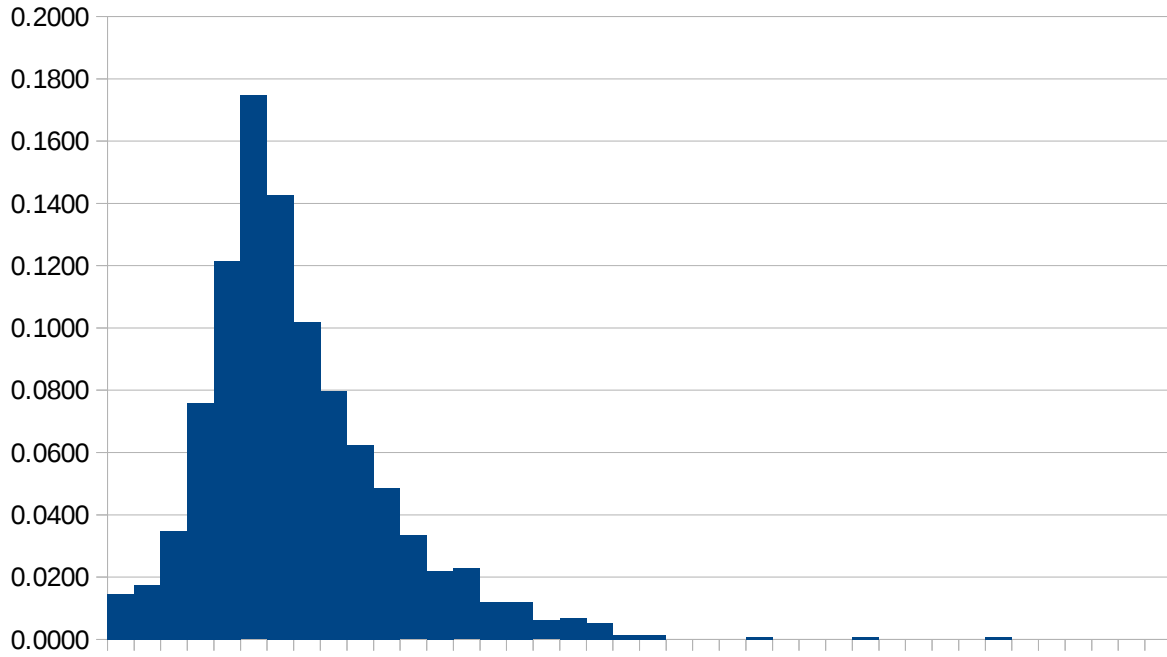
Distribution C



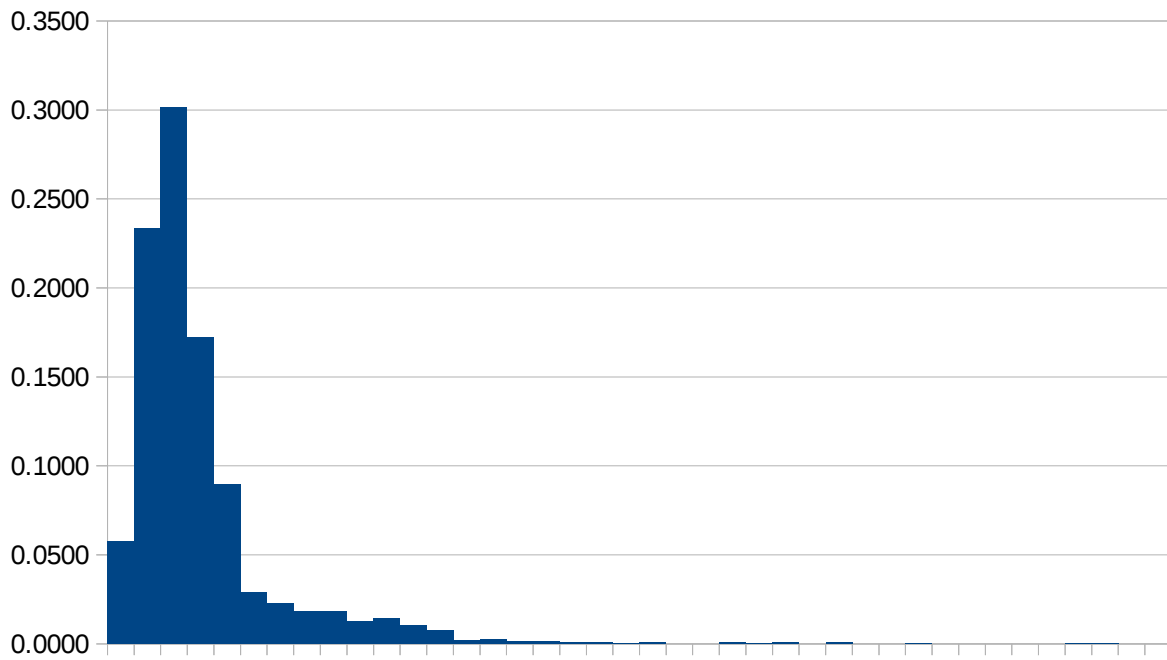
Distribution D



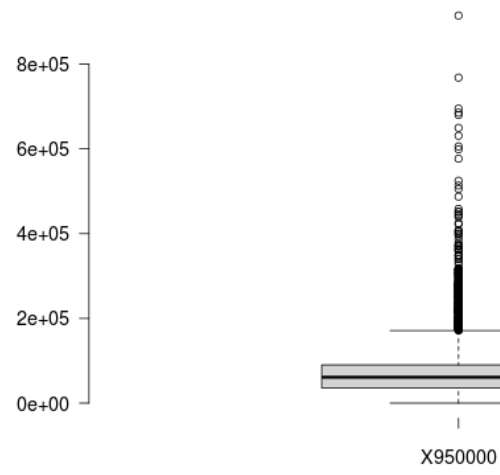
Distribution E



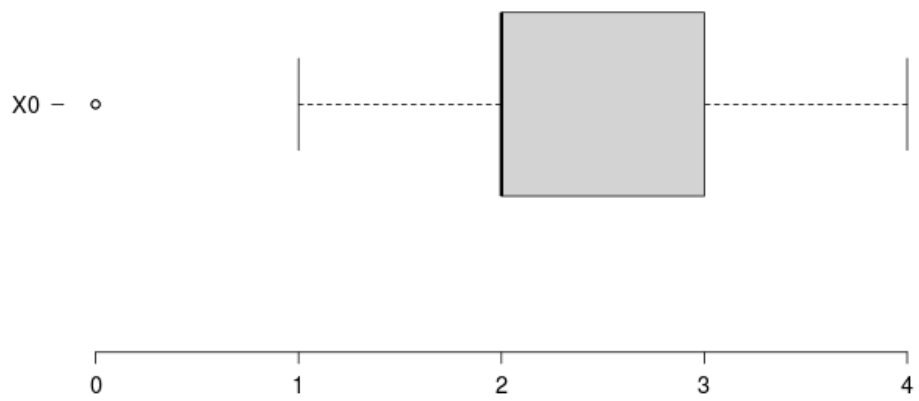
Distribution F



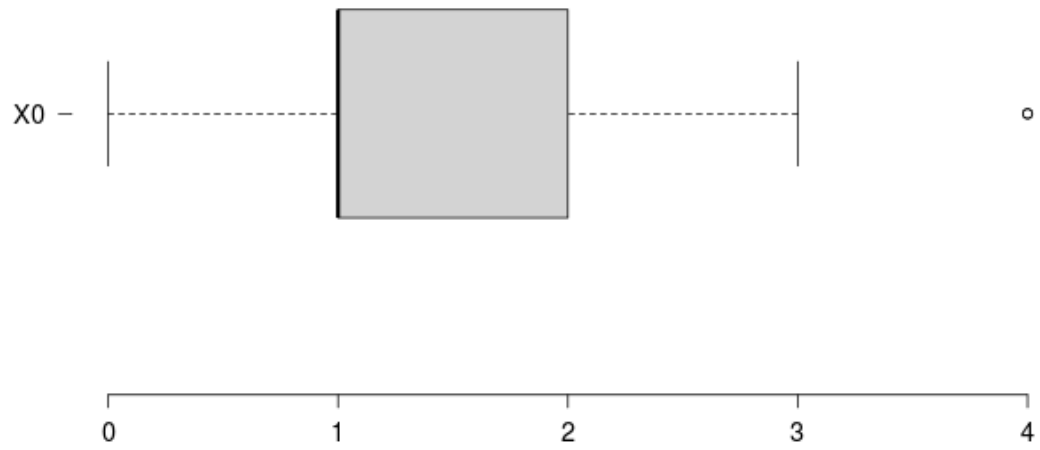
BoxPlot 1



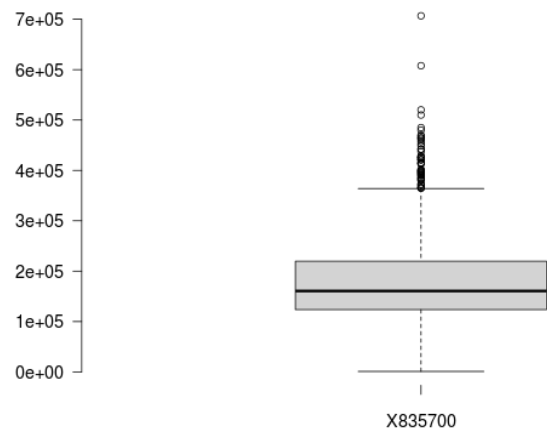
BoxPlot 2



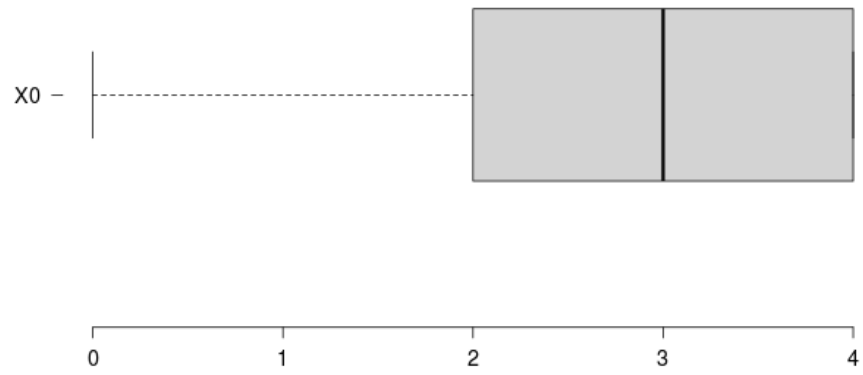
BoxPlot 3



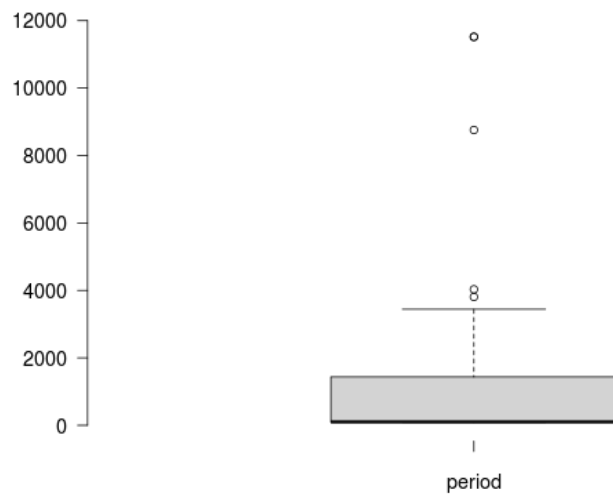
BoxPlot 4



BoxPlot 5



BoxPlot 6



Stats Z

n	1885
stdev	749.86174534
mean	563.60803183
median	100.4
min	90.52
max	11520

Stats R

n	36
stdev	1.0419761445
mean	2.3333333333
median	2

Stats Y

n	36.000
stdev	1.276
mean	2.833
median	3.000

Stats W

n	3601
stdev	74132.348519
mean	86584.114135
median	67400
min	1000
max	950000

Stats X

n	1317
stdev	88751.58357
mean	178994.61276
median	160800
min	1000
max	835700

Stats Q

n	36.000
stdev	1.132
mean	1.444
median	1.000

Source J: Speed of takeoff of military aircraft in WWII

Source K: The orbital period of human-made satellites around the earth

Source L: Grade distribution in an "easy" class

Source M: Grade distribution in a "harder" class

Source N: Grade distribution in a "curved" class

Source O: Property values in a more affluent area

Source P: Property values in a less affluent area

Source H: Entry test exam scores for a selective college

Source I: Average respiration rates of mammals

